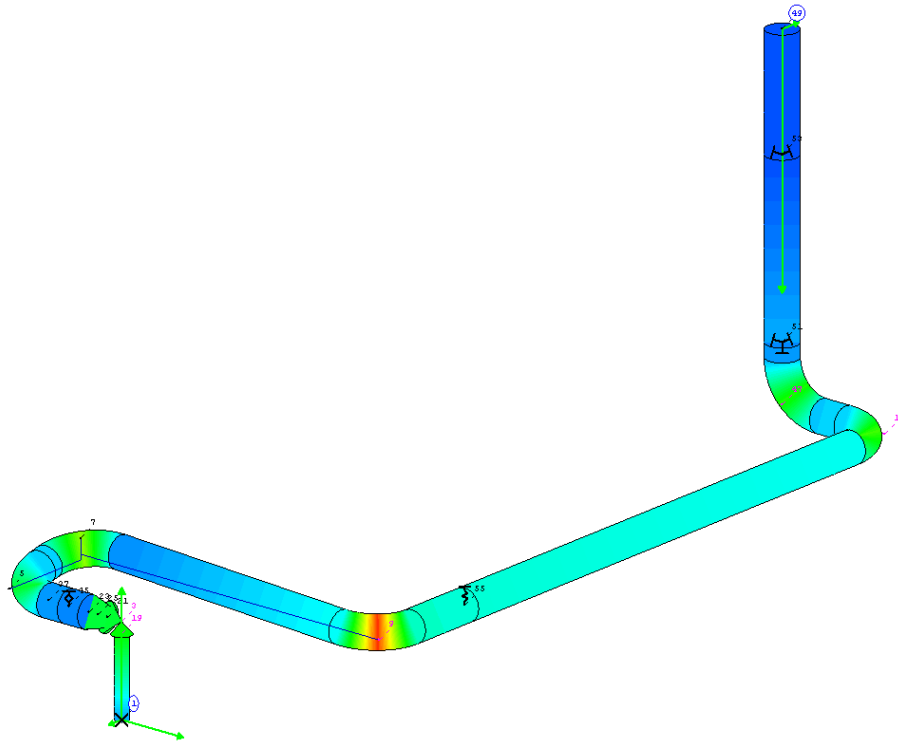
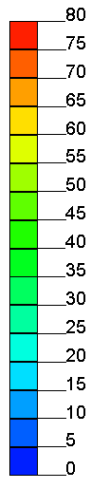


SigV [N/mm<sup>2</sup>]



Result load case Temperatur: SIG-V: Extreme value: 75.2 N/mm<sup>2</sup> at node 9

- ⊕ Constant hanger
- ⌒ Spring
- ⊥ Rigid support
- ⊗ Anchor point

**PlantWare**  
www.plantware.dk

PlantWare A/S Engineering  
Skovlytoften 4  
DK-2840 Holte

**ROHR2**

Commiss.:

Date : 18. 6.2007

Project: