

Plantware

PlantWare Engineering: Company Profile

Plant Design

PlantWare's main product is plant design solutions based on two product lines:

- Engineering based on in-house tools
- Commercial software applications

We make Plant Design Based on

- PDMS 3D system from AVEVA in Cambridge, UK
- Database application developed by PlantWare Aps
- PFD and PID made in Visio

PDMS

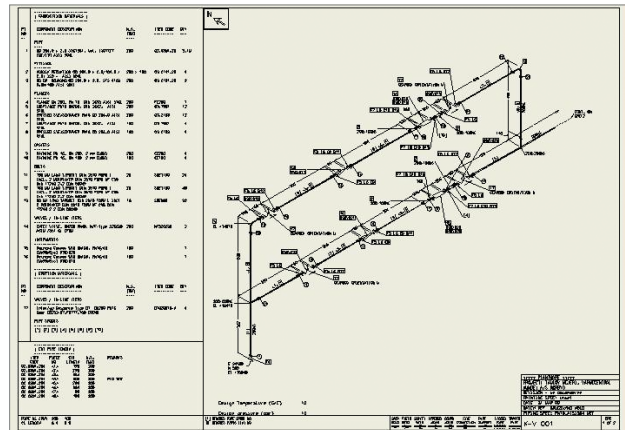
An AVEVA Ltd. Product

This system is used for visualisation, engineering and the making of e.g.

- General arrangement drawings (plane and isometric)
- Isometric piping drawings
- Pipe isometric (fabrication, erection etc.)
- Steel detailing, arrangement drawings
- Steel detailing, fabrication drawings
- Hangers and support drawings
- MTO-lists of pipe items
- MTO-lists of steel items
- and much more

Above mentioned drawings will be generated automatically through PlantWare's own macro-programming, all except pipe isometrics which is made through AVEVA Isodraft.

Furthermore, we use advanced macro control of e.g. piping design (fall, dead legs, bending radiuses and more). An example of a pipe isometrics is displayed at top right side.



Database Applications

Made in MS Access or MS SQL server

We develop advanced engineering databases for handling of components and documents in terms of shipment lists for custom declarations to IQ and OQ schedules.

Our work is based on TAG-numbering as defined in KKS. KKS numbering is in our opinion far the best numbering standard when it comes to process plants, but we can also hand any derivation of ISA-numbering and most custom made systems.



Plantware

PlantWare Engineering: Company Profile

The database connected to Visio diagram at aggregate (top) level and through Visio to PDMS. We also make consistency check directly between an external database and PDMS and thereby secure consistent engineering through out the design phase.

Configuration Software

PED - Process and Equipment documentation

Apart from the above mentioned general database application we make configuration software on top of the databases. With this combination we can control the items in the database by easy to use configuration menus.

With this software sales personnel are able to configure a quotation and adjust this through the negotiation with the client. When a contract is signed, all necessary documentation can be printed out from PED without any further detailing. Afterwards the engineering department will only need to make adjustments due to changes in scope.

ABB		Projekt: 155 Vestforbrændingen blok 8		VEDLIGEHOLDSSKEMA	
Division nr.: EN02571042		Eksklusiv ombygning			
Identifikator:	ABB MOTOR	Bemærk: Driftstimer er defineret ved anlæggets samlede driftstimer			
KKIDnr:	MOTOR				
Basisskema:	MOTOR				
Funktionsnr.:	09-05116				
Tegning med vedligeholdsskema nr.:		Lin. Komponent	Pos.:	Aktivering	Bemærkning
ABB Motor motor	ABB_motor	02 Generelt	-	Luf eller risikoløse	Kontrolnr.:
ABB_motor_bsp		03 Motor tilslutning	-	Kontrol af elektrens tilslutning og stand	
		04 Generelt	-	Rengøring for smuds, olie og olie	
		05 Løser	-	Kontrol af olie	15000 timer 2 år
		06 Løser	-	Udskift løser	5 år

Standard VH plan: MOTOR3 ABB Motor uden smørings

Fabrikat:

Type:

Leverandør: DI MATTEO PORDERTECHNIK GMBH

Prisen:

MEC:

Indenfor:

Tuesday, January 05, 1999 Side 1 af 1

PlantWare Profile

PlantWare was founded in 1998 is fully owned by PlantWare Holding ApS. PlantWare has subsidiary engineering companies in India and Oman and is represented by licensed agents in Abu Dhabi (UAE) and Bangladesh. More information available at www.plantware.dk.



Design examples: WFI distribution unit for CHRIST Nordic AB and buffer preparation installation for CMC Biopharmaceuticals A/S. These examples represents our capabilities within biotech and pharmacy industries.