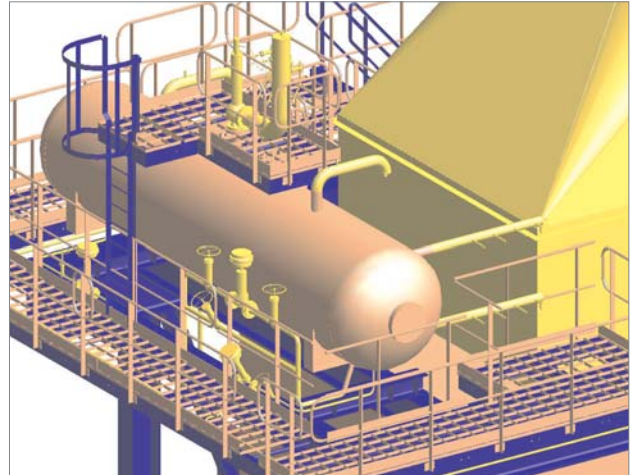
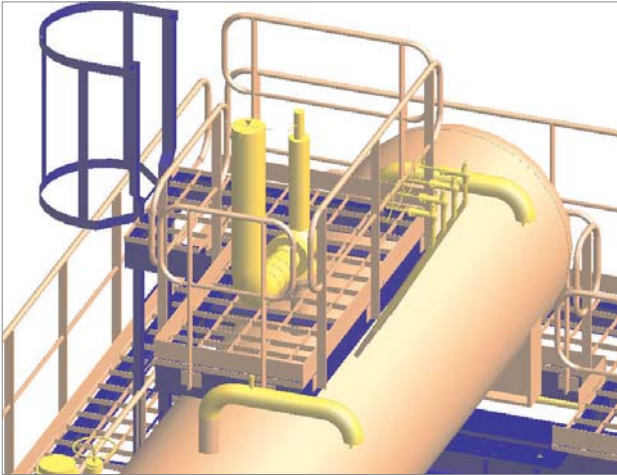
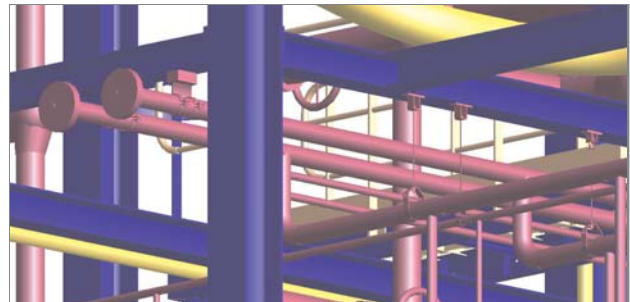


Aalborg Engineering A/S - Layout of HRSG



For Aalborg Engineering A/S PlantWare made general arrangement of a HRSG boiler for quotation:

Detailed arrangement of main steel structures including FEM-calculations, platforms and access stair & ladders, pipework etc. The output from the 3D PDMS model was 'Bill of Material' for piping, steel structures, hand rails, stairs, gratings etc. for accurate price calculations.



10 års anniversary

The 1st March it is 10 years ago Mr. Christian Pallesen launched PlantWare based on intelligent plant design solution as foundation for the business. Throughout the years a lot of projects has been made within pharmaceutical, food, industrial/chemical and power plants for clients in Denmark, Sweden, Germany and the USA.

Demo of CONVAL and AVEVA PDMS version 12 throughout the reception.



Rendering

PlantWare makes rendering for project presentations or sales prospects in StudioMax. The rendering jobs will be performed either locally in Denmark or at partner company in the Philippines.

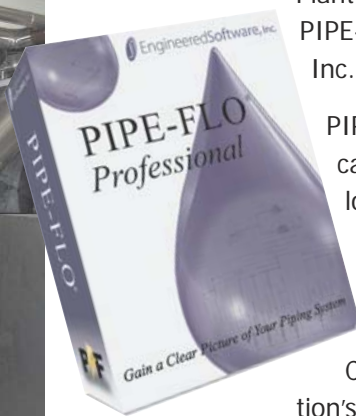
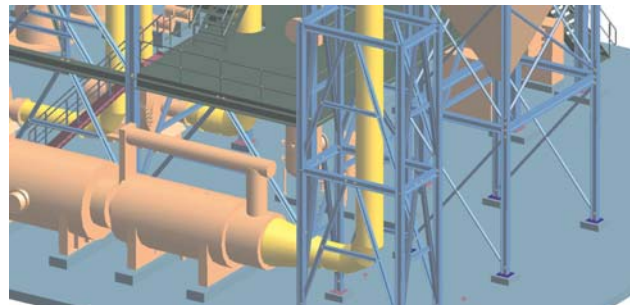
To the right a waste water plant is shown. The rendered model was used for a sales project by our client.



WSA Desulphurization plant for Haldor Topsøe

PlantWare has made general arrangement of a Haldor Topsøe WSA Desulphurization plant for a refinery in Kazakhstan.

The scope consisted of overall arrangement of plant plus arrangement of flue gas ducts, steel structures, platforms and access stairs & ladders as well as main equipment. Plantware delivered both general and detail arrangement drawings



PIPE-FLO®

PlantWare has become Scandinavian distributor of PIPE-FLO and PUMP-FLO from Engineered Software Inc. (USA).

PIPE-FLO is the leading software package for calculation of piping system: sizing and pressure loss. PUMP-FLO contains a database of pump characteristics from all major pump suppliers enabling the user to easily select the correct pump for the actual pressure loss in system.

Contact Christian Pallesen for further information's or via e-mail pipe-flow@plantware.dk.

New Chairman of the Board

Mr. Jan Fabricius is our new Chairman, and brings in 25 years of experience in starting up and growing companies mainly within the marine industry,

shipping, naval engineering etc. Mr. Fabricius operates Stella Shipping A/S out of Marstal. We welcome Mr. Fabricius to PlantWare