

## BioEner ApS - Connection Piping for Biomass Boiler

Engineering of both external and internal piping for the straw fired power plant at Fynsværket in Denmark (FYV8). The engineering was based on advanced 3D PDMS model and we produced:

- GA - General Arrangement Drawings  
- section flat, section perpendicular and isometric views
- DA - Detailed Arrangement Drawings  
- section flat, section perpendicular and isometric views
- Isometric drawings of piping
- Piping isometrics

PlantWare final output was manufacturing drawings for fabrication of piping. The piping will be manufactured at SEFACO in Poland.



## SUN Chemicals A/S - Buffer preparation plant

PlantWare made mechanical design of a new buffer preparation plant for SUN Chemical in Køge, Denmark. PlantWare made

- PFD/PID
- Overall arrangement
- Piping
- Steel work
- Platforms + access stairs and ladders
- Pipe bridges and misc. structures
- HVAC arrangement

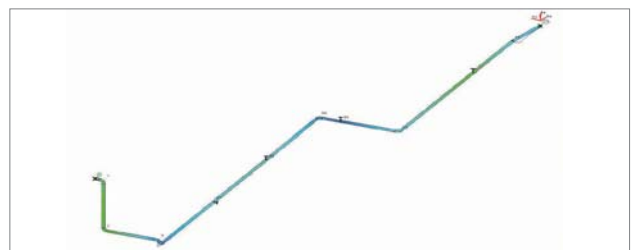
PlantWare started with basic design based on client wishes for the plant and ended with detailed engineering.



## Novozymes A/S - Pipe Flexibility Calculations

For Chris Jensen A/S PlantWare made flexibility calculations with ROHR2 from German engineering software company SIGMA.

The flexibility was checked for series of new pipe installations connecting different equipment and new valve matrices.



## B2B Signing Ceremony, Dhaka, Bangladesh

In May Stella Shipping P/S (Marstal DK), Western Marine Shipyard Ltd (Chittagong BD) and PlantWare A/S (Holte DK) signed the DANIDA B2B agreement for a pilot project for applying advanced engineering skills to Bangladesh. During the pilot phase 6 engineers from Western Marine Shipyard will attend training in computer aided engineering - especially the 3D plant design system from AVEVA: PDMS - as well as basic training within engineering of steel structures, piping etc.

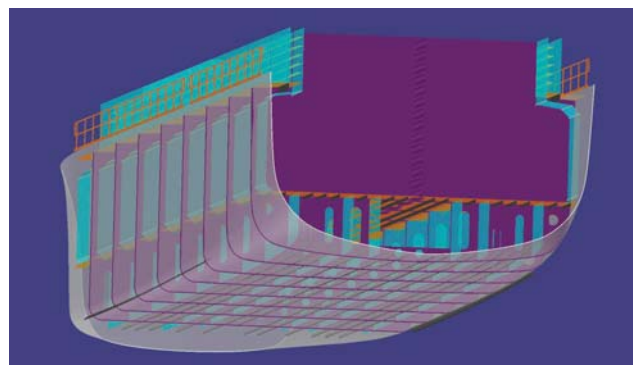
The co-operation has been supported by the Royal Danish Embassy's Business-to-Business (B2B) program under the umbrella of DANIDA, assisting in the knowledge transfer to the Bangladeshi marine engineers.



In the picture in first row Mr. Ambassador Einer Jensen, Mr. Niels Vestergaard, Hussein Sakhawat and Christian Pallesen has just signed the contract. Furthermore representatives from Stella Shipping P/S and Western Marine Shipyard Ltd and Mr. Ib Albertsen from the embassy was present.

## Intergraph SmartMarine 3D

PlantWare is currently testing Intergraph's 3D-modelling technologies, SmartMarine3D and SmartPlant3D. SmartMarine 3D is primarily for ship design: from basic hull design all the way to final outfitting. We are also looking forward to delivering SmartPlant 3D solutions to our industrial clients in the near future. A sample of PlantWare's first vessel is shown here. More information to follow.



## CONVAL 7.0

Calculation and selection of control valves, orifice plates etc.  
Design of blow-off systems and calculate de-pressurization.  
For more information mail to [conval@plantware.dk](mailto:conval@plantware.dk).

