

Hvidovre Hospital / Rambøll A/S

For Rambøll A/S PlantWare conducted site-supervision for the new department for infections deceases at Hvidovre Hospital.

This department shall handle patients with deceases like SARS and bird-flue. The site-supervision was related to building utilities like heating, water, sewage, ventilation, steam supply to the kill-plant, vacuum installations and installation of different clean gasses.



PlantWare Kirpalaney Engineering India Private Limited

PlantWare and Kirpalaney has opened a Joint Venture Engineering Company in Mumbai, India. Our new office building in the picture will be finished late 2009. PlantWare Kirpalaney Engineering will perform engineering of on-shore and off-shore oil and gas installations, power plants and pharmaceutical plants etc. Please visit www.pk-engineering.in for more information.

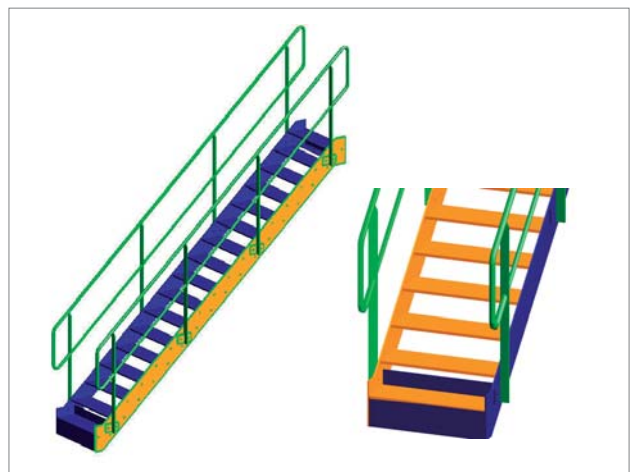


PDMS Stairs and Ladders

PlantWare has through the years developed a new Stair and Ladder module for AVEVA PDMS enabling detailed engineering in PDMS for directly creation of fabrication drawings.

The Stair macro creates the stair of panels, panel fittings, steel sections. Bill of Material as well as total weight will be correct.

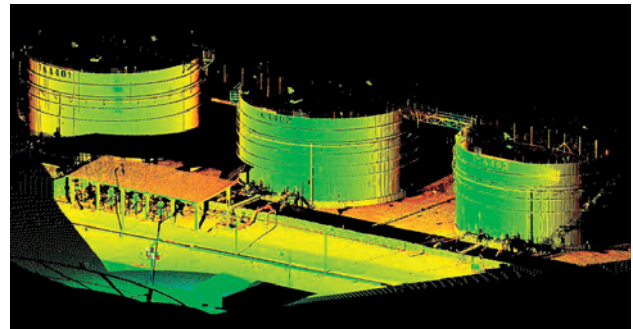
Further more the macro contains a PDMS Draft Version for automatically search and find all stairs in a 3D model and create the necessary drawings for fabrication for all stairs.



LEICA Scanning

PlantWare offers 3D scanning with LEICA Scanner. We can process the scannings either via

- Surfacer: Output is surface models (in e.g. IGES format) to mechanical CAD software like Microstation, Inventor, Catia, ProE and Solidworks
- Cloudworks: Output to AVEVA PDMS



The Scanning is made with the newest Leica scanner - LEICA ScanStation 2 - which scans up to 60,000 points per second. Post-processing of the point cloud is performed by personnel from our off-shore office in Mauritius, which enables competitive prices. There is more information about creating as-built documentation based on laser scanning on our website www.plantware.dk. Please contact us at scanning@plantware.dk for more information or a quote for specific project.

New Chairman of the Board: Jan Jørgensen

Mr. Jan Jørgensen stepped in as Chairman of the board in PlantWare Holding ApS and PlantWare A/S on September 8th 2008.

Mr. Jan Jørgensen is Managing Director of the Danish division of American United Conveyor Corporation. This division is placed in Skovlunde and handles sales and project execution in Europe and the Middle East.

Mr. Jan Jørgensen succeeds Mr. Jan Fabricius as Chairman of the Board. Mr. Jan Fabricius is also Chairman of the Board for Stella Shipping P/S and when Stella Shipping P/S became one of PlantWare A/S biggest clients and most important business partners this change was natural.

