

POS.	Quantity	Descriptin	MATERIAL Norm/Certificat	TEGN. NR.
1	8.9M	OD 273.0 x 6.3 DIN 2448	STEEL P235GH-TC1 acc. EN 10216-2 (Cert. 3.1 EN 10204)	17003 XX XXXX
2	2.0M	OD 273.0 x 7.1 DIN 2448	STEEL P235GH-TC1 acc. EN 10216-2 (Cert. 3.1 EN 10204)	17003 XX XXXX
3	0.4M	PIPE OD 114.3 x 10.0 EN 10216-2	16M63 acc. EN 10216-2 (Cert. 3.1 EN 10204)	17003 XX XXXX
4	0.9M	OD 33.7 x 2.6 DIN 2440 Galv. DIN2444	STEEL P235GH-TC1 acc. EN 10216-2 (Cert. 3.1 EN 10204)	17003 XX XXXX
5	1	REDUCTION CONC DIN 2616-2 273.0 x 6.3 / 168.3 x 4.5	STEEL P235GH-TC1 acc. EN 10216-2 (Cert. 3.1 EN 10204)	17003 XX XXXX
6	1	STUDS (SETON PIPE) OD 33.7 x 4.5 DIN 2448	STEEL P235GH-TC1 acc. EN 10216-2 (Cert. 3.1 EN 10204)	17003 XX XXXX
7	5	ELBO 90, OD 273.0 x 6.3 DIN 2605 TEIL 1 BAUART 3	STEEL P235GH-TC1 acc. EN 10216-2 (Cert. 3.1 EN 10204)	17003 XX XXXX
8	3	ELBO 90, OD 33.7 x 2.6 DIN 2605 TEIL 1 BAUART 3	STEEL P235GH-TC1 acc. EN 10216-2 (Cert. 3.1 EN 10204)	17003 XX XXXX
9	1	FLANGE DN 150, PN 40, DIN 2635	STEEL P235GH-TC1 acc. EN 10216-2 (Cert. 3.1 EN 10204)	17003 XX XXXX
10	2	FLANGE DN 100, PN 160, DIN 2638	STEEL P235GH-TC1 acc. EN 10216-2 (Cert. 3.1 EN 10204)	17003 XX XXXX
11	1	GASKET KLINGERSIL C-4500 DN150, 2mm	MATERIAL: See datasheet from supplier.	A1LBU10AA001
12	2	GASKET KLINGER MaxiFlex (Spiral Wound) DN100, #1500 SAFETY VALVE: BOPP & REUTHER Type Si. 6304.35 DN100xDN150, PN160/40	MATERIAL: See datasheet from supplier.	A1LBU10AA001
13	1			

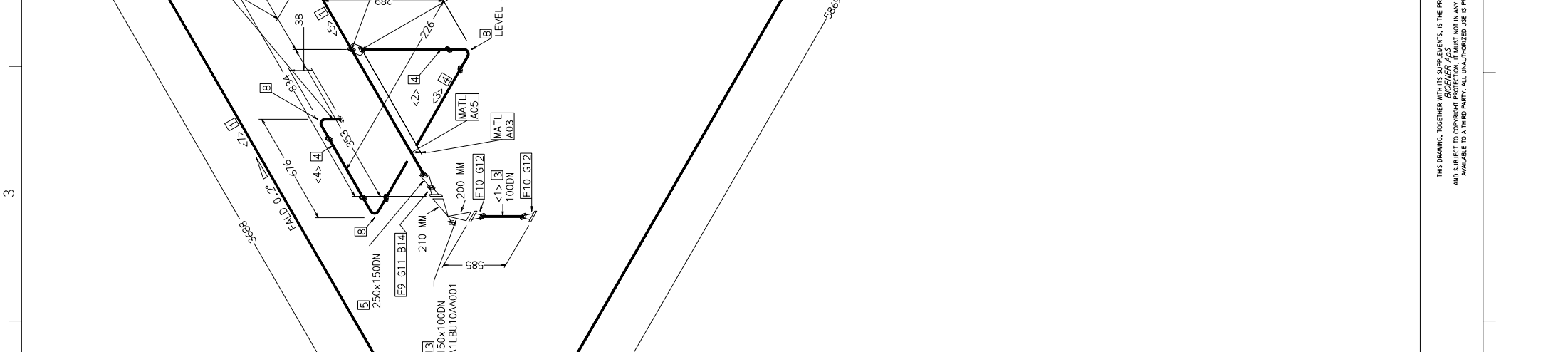
POS.	Quantity	Descriptin	MATERIAL Norm/Certificat	TEGN. NR.
14	8	80 MM LANG BOLT DIN 931 INCL 1 MOTRIK DIN 934		

TEGN. NR.	No.	Length (mm)	DN (mm)	TEGN. NR.	END PREP.
<1>	385	101	25		BE/BE
<2>	150	25	25		BE/BE
<3>	600	25	25		BE/BE
<4>	200	250	250		BE/BE
<5>	578	2927	250		BE/BE
<6>	5107	250	250		BE/BE
<7>	1968	250	250		BE/BE
<8>					
<9>					

Insulation supports:  
 Shall be welded onto horizontal pipes 1500mm above elbo/bend and then for every 4000mm.

Marking:  
 When splitting the pipe, marking shall be <KKS-NUMBER> + <MR01> ascending in flow direction. For example A2LBU10BR001-MR01.

SHEET NO.1 OF 1



		ITOCHU/TAKUMA CONSORTIUM Takuma Drawing No.:	
Design code:	687	Format:	A1
Total weight:	687	Client:	LAKESIDE ENERGY FROM WASTE LTD.
Client ID Code: LP-05-01-D0411		Title: Bolter1 Drum saf. blow off A1LBU10BR001	
Date:	18 JUN 2007	Boomer Drawing No.:	1014-5200-MTC12-081
Author:	xxx	Rev.:	0
Design:	yy.rmm.ud	Approved:	
Verified:		Revision description:	