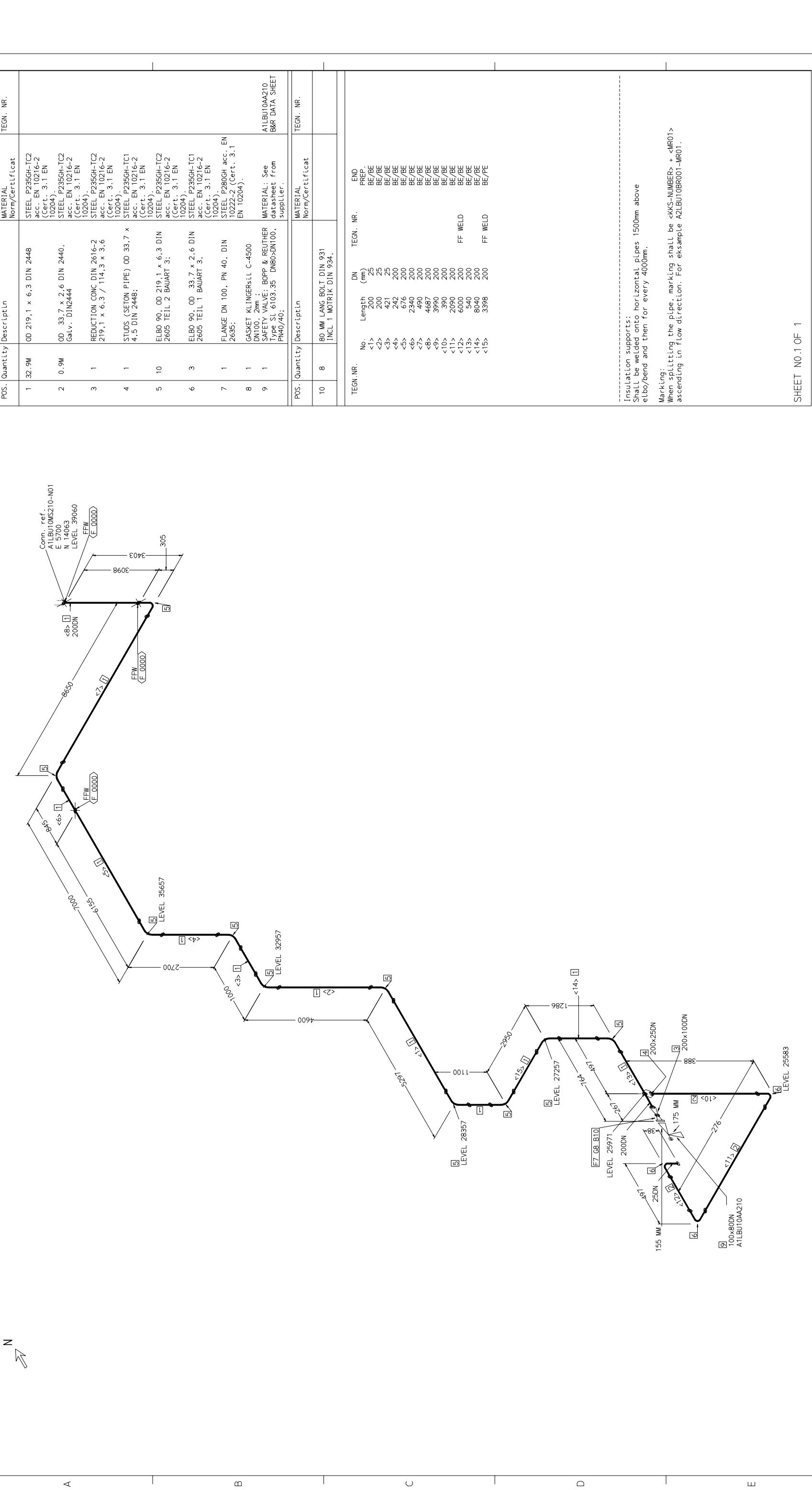


1 2 3 4 5 6 7 8



POS.	Quantity	Descriptin	MATERIAL Norm/Certificat	TEGN. NR.
1	32.9M	OD 219,1 x 6,3 DIN 2448	STEEL P235GH-TC2 acc. EN 10216-2 (Cert. 3.1 EN 10204)	
2	0.9M	OD 33,7 x 2,6 DIN 2440, Galv. DIN2444	STEEL P235GH-TC2 acc. EN 10216-2 (Cert. 3.1 EN 10204)	
3	1	REDUCTION CONC DIN 2616-2 219,1 x 6,3 / 114,3 x 3,6	STEEL P235GH-TC2 acc. EN 10216-2 (Cert. 3.1 EN 10204)	
4	1	STUDS (SETON PIPE) OD 33,7 x 4,5 DIN 2448;	STEEL P235GH-TC1 acc. EN 10216-2 (Cert. 3.1 EN 10204)	
5	10	ELBO 90, OD 219,1 x 6,3 DIN 2605 TEIL 2 BAUART 3;	STEEL P235GH-TC2 acc. EN 10216-2 (Cert. 3.1 EN 10204)	
6	3	ELBO 90, OD 33,7 x 2,6 DIN 2605 TEIL 1 BAUART 3;	STEEL P235GH-TC1 acc. EN 10216-2 (Cert. 3.1 EN 10204)	
7	1	FLANGE DN 100, PN 40, DIN 2635;	STEEL P280GH acc. EN 10222-2 (Cert. 3.1 EN 10204)	
8	1	GASKET KLINGERSIL C-4500 DN100, 2mm ;	MATERIAL: See datasheet from supplier.	A1LBUI0AA210 B&R DATA SHEET
9	1	SAFETY VALVE: BOPP & REUTHER Type SL 6103.35 DN80>DN100, PN40/40;		

POS.	Quantity	Descriptin	MATERIAL Norm/Certificat	TEGN. NR.
10	8	80 MM LANG BOLT DIN 931 INCL 1 MOTRIK DIN 934.		

TEGN. NR.	No.	Length (mm)	DN (mm)	TEGN. NR.	END PREP.
<1>	200	25	25		BE/RE
<2>	200	25	25		BE/RE
<3>	421	25	25		BE/RE
<4>	242	200	200		BE/RE
<5>	676	200	200		BE/RE
<6>	2340	200	200		BE/RE
<7>	490	200	200		BE/RE
<8>	4687	200	200		BE/RE
<9>	3990	200	200		BE/RE
<10>	390	200	200		BE/RE
<11>	2090	200	200		BE/RE
<12>	6000	200	200	FF WELD	BE/RE
<13>	540	200	200		BE/RE
<14>	8040	200	200		BE/RE
<15>	3398	200	200	FF WELD	BE/RE

Insulation supports:
 Shall be welded onto horizontal pipes 1500mm above elbo/bend and then for every 4000mm.

Marking:
 When splitting the pipe, marking shall be <KKS-NUMBER> + <MR01> ascending in flow direction. For eksample A2LBUI0BR001-MR01.

SHEET NO.1 OF 1

BIOENER APS
 Biomass Energy

Design code: 1450
 Total weight: 1450
 Main scale: A1
 Client: LAKESIDE ENERGY FROM WASTE LTD.

Client ID Code: LP-05-01-D0411

18 JUN 2007 CP
 Date: yy.mm.dd | Designed | Verified | Approved | Revision description

0
 Rev:

Pressure: 9 Temperature: 440

Takuma Drawing No.:

Plant:

Title: Bolter1 SH saf. valve blow off A1LBUI0BR210

Bloener Drawing No.: 1014-5200-MTC12-083